



Warrington Road  
Higher Walton  
Warrington  
WA4 5LU

# Adults Safeguarding Policy

## Introduction

Walton Hall Golf Club is committed to creating and maintaining a safe and positive environment for all individuals involved in golf.

Safeguarding duties apply to an adult who:

- Has needs for care and support (whether or not the local authority is meeting any of those needs) and;
- Is experiencing, or is at risk of, abuse or neglect; and;
- As a result of those care and support needs, they are unable to protect themselves from either the risk of, or the experience of abuse or neglect.

## Principles in relation to adults at risk

The Care and Support Statutory Guidance Section 14.13 sets out the following six key principles which underpin all adult safeguarding work:

- Empowerment: People being supported and encouraged to make their own decisions and informed consent.
- Prevention: It is better to take action before harm occurs.
- Proportionality: The least intrusive response appropriate to the risk presented.
- Protection: Support and representation for those in greatest need.
- Partnership: Local solutions through services working with their communities. Communities have a part to play in preventing, detecting and reporting neglect and abuse.
- Accountability: Accountability and transparency in delivering safeguarding.

**Making safeguarding personal** is the concept that adult safeguarding should be person led and outcome focused. It engages the person in a conversation about how best to respond to their safeguarding situation in a way that enhances involvement, choice and control. As well as improving quality of life, well-being and safety.

Wherever possible discuss safeguarding concerns with the adult to get their view of what they would like to happen and keep them involved in the safeguarding process, seeking their consent to share information outside of the organisation where necessary.

The principles of the Mental Capacity Act 2005 (MCA) state that every individual has the right to make their own decisions and provides the framework for this to happen.

In addition, Walton Hall Golf Club recognises the following principles which underpin our work with all groups and individuals who may have additional needs for support and protection:

- It is every adult's right to be protected from abuse irrespective of their age, gender identity, faith or religion, culture, ethnicity, sexual orientation, background, economic position, marital status, disability or level of ability.
- All staff and volunteers must share the responsibility for the protection of adults at risk and will show respect and understanding for their rights, safety and welfare.
- The additional vulnerability of disabled adults (including those with invisible disabilities, learning and communication differences) is recognised.
- Allegations of abuse or concerns about the welfare of any adult will be treated seriously and will be responded to swiftly and appropriately.
- Walton Hall Golf Club recognises the role and responsibilities of the statutory agencies in safeguarding adults and is committed to complying with the procedures of the Local Safeguarding Adults Boards.
- Confidentiality will be maintained appropriately at all times, and the adult's safety and welfare must be the overriding consideration when making decisions on whether or not to share information about them.
- Walton Hall Golf Club will support all adults to understand their roles and responsibilities with regards to safeguarding and protecting adults at risk, including the responsibility to report all concerns in line with the clubs safeguarding Adults policy and procedures.
- All participants involved in golfing activities have the right to be heard.

## Guidance and legislation

The practices and procedures within this policy are based on the principles contained within the UK and legislation and Government Guidance and have been developed to complement the Safeguarding Adults Boards policy and procedures, and take the following acts into consideration:

- The Care Act 2014
- The Protection of Freedoms Act 2012
- Domestic Violence, Crime and Victims (Amendment ) Act 2012
- The Equality Act 2010
- The Safeguarding Vulnerable Groups Act 2006
- Mental Capacity Act 2005
- Sexual Offences Act 2003
- The Human Rights Act 1998
- The Data Protection Act 2018

## Responsibilities and implementation

Walton Hall Golf Club will seek to promote the principles of safeguarding by:

- Reviewing the policy and procedures every three years or whenever there is a major change in legislation.
- Giving guidance on appropriate recruitment procedures to assess the suitability of volunteers and staff working with vulnerable groups.
- Following procedures to report welfare concerns and allegations about the behaviour of adults and ensure that all staff, volunteers, parents and participants, including children, are aware of these procedures.
- Directing club staff, volunteers & coaches to appropriate safeguarding training and learning opportunities, where this is appropriate to their role.

## Complaints, Concerns and Allegations

- 1.1** As a player, parent, carer, member of staff or volunteer you may be concerned about the welfare of an adult, become aware that abuse or poor practice is taking place, suspect abuse or poor practice may be occurring or be told about something that may be abuse or poor practice. These concerns should be brought to the attention of the England Golf Lead Safeguarding Officer without delay.
- 1.2** The person reporting the concern is not required to decide whether abuse has occurred, but simply has a duty to pass on their concerns and any relevant information. All concerns will be treated in confidence. Details should only be shared on a 'need to know' basis with those who can help with the management of the concern.
- 1.3** Concerns will be recorded on an Incident Report Form and sent to England Golf Lead Safeguarding Officer and retained confidentially. The Lead Safeguarding Officer will assist with completion of this form if required, Contact 01526 351824.
- 1.4** Walton Hall Golf Club will work with England Golf, Counties and any other external agencies to take appropriate action where concerns relate to potential abuse or serious poor practice. The Clubs disciplinary procedures will be applied.
- 1.5** Safeguarding adults at risk requires everyone to be committed to the highest possible standards of openness, integrity and accountability. Walton Hall Golf Club supports an environment where staff, volunteers, parents/carers and the public are encouraged to raise safeguarding concerns. Anyone who reports a legitimate concern to the organisation (even if their concerns subsequently appear to be unfounded) will be supported. All concerns will be taken seriously.
- 1.6** If anyone has been subjected to abuse or has heard any abuse by a member of the public out on the golf course, then they should report this to the Pro-shop.
- 1.7** It is important when considering your concern that you also consider the needs and wishes of the person at risk.

## 1. Responding to disclosure of abuse

**2.1** If an adult indicates that they are being abused, the person receiving the Information should:

- Stay Calm
- Listen carefully to what is said, allowing the adult to continue at their own pace, and take it seriously.
- Explain that it is likely the information will be shared, do not promise to keep secrets.
- Keep questions to a minimum, only ask questions if you need to identify/clarify what the person is telling you. Take care to distinguish between fact, observation, allegation and opinion. It is important that the information you have is accurate.
- Reassure the person that they have done the right thing in revealing the information.
- Ask them what they would like to happen next.
- Explain what you would like to do next and ask if they are happy for you to share the information in order for you to help them. As long as it does not increase the risk to the individual, you should explain to them that it is your duty to share your concern with your Lead Safeguarding Officer.
- Record in writing what was said using the adult's own words as soon as possible

**2.2** DO NOT:

- Dismiss the concern.
- Panic or allow shock or distaste to show.
- Probe for more information than is offered.
- Make any promises.
- Conduct an investigation of the case.
- Make negative comments about the alleged perpetrator.

If the matter is urgent and relates to the immediate safety of an adult at risk then contact the police immediately. Complete an Incident Form and copy it to the England Golf Lead Safeguarding Officer within 24 hours.

## 2. Signs and indicators of abuse and neglect

**3.1** Abuse can take place in any context. Abuse may be inflicted by anyone. Players, members, staff, volunteers or coaches may suspect that an adult is being abused or neglected outside of the clubs setting. There are many signs and indicators that may suggest someone is being abused or neglected, these include but are not limited to:

- Unexplained bruises or injuries – or lack of medical attention when an injury is present.
- Person has belongings or money going missing.
- Person is not attending / no longer enjoying their sessions.
- Someone losing or gaining weight / an unkempt appearance. A change in the behaviour or confidence of a person.
- Self-harm.
- A fear of a particular group or individual.
- They may tell you / another person they are being abused – i.e. a disclosure.

## 3. Consent

**4.1** The Care Act 2014 statutory guidance advises that the first priority in safeguarding should always be to ensure the safety and well-being of the adult.

**4.2** Adults have a general right to independence, choice and self-determination including control over information about themselves.

**4.3** Walton Hall Golf Club does not expect staff, coaches or volunteers to support an adult who is felt to be vulnerable or at risk through their decision making process, but expects them to inform England Golf without delay so that they can clearly define the various options to help support the adult at risk. As long as it does not increase the risk to the individual, it should be explained that it is their duty to share their concerns with the England Golf Lead Safeguarding Officer. Consent is not required to seek guidance or share information with the National Governing Body.

**4.4** Adults may not give their consent to the sharing of safeguarding information outside of the organisation for a number of reasons. For example, they may be unduly influenced, coerced or intimidated by another person, they may be frightened of reprisals, they may fear losing control, they may not trust social services or other partners or they may fear that their relationship with the abuser will be damaged. Reassurance and appropriate support may help to change their view on whether it is best to share information.

**4.5** Those seeking to support the adult should consider the following:

- Explore the reasons for the adult's objections. What are they worried about?
- Explain the concern and why you think it is important to share the information
- Tell the adult with whom you may be sharing the information with and why
- Explain the benefits, to them or others, of sharing information – could
- They access better help and support.
- Discuss the consequences of not sharing the information – could someone come to harm?
- Reassure them that the information will not be shared with anyone who does not need to know
- Reassure them that they are not alone and that support is available to them.

**4.6** If the adult continues to refuse intervention to support them with a safeguarding concern, or requests that information about them is not shared with other safeguarding partners their wishes should be respected.

**4.7** However, there are a number of circumstances where those seeking to support the adult can reasonably override such a decision, including but not limited to:

- It appears that the adult lacks the mental capacity to make that decision (this must be properly explored and further guidance should be sought from the England Golf Lead Safeguarding Officer)
- Emergency or life-threatening situations may warrant the sharing of relevant information with the emergency services without consent
- Other people are, or may be, at risk, including children



- A serious crime has been committed / may be prevented
- Individuals in a Position of Trust are implicated

**4.7.1** In such circumstances, it is important to keep a careful record of the decision-making process and guidance should be sought from the England Golf Lead Safeguarding Officer. Legal advice will be sought where appropriate. If the decision is to take action without the adult's consent, then unless it is unsafe to do so, the adult should be informed that this is being done and of the reasons why.

## 4. Useful Contacts

### England Golf Useful Contacts

Name	Address	Number and email
Lead Safeguarding Officer	England Golf National Golf Centre The Broadway Woodhall Spa Lincolnshire LN10 6PU	01526 351824 safeguarding@englandgolf.org

### Local Contacts

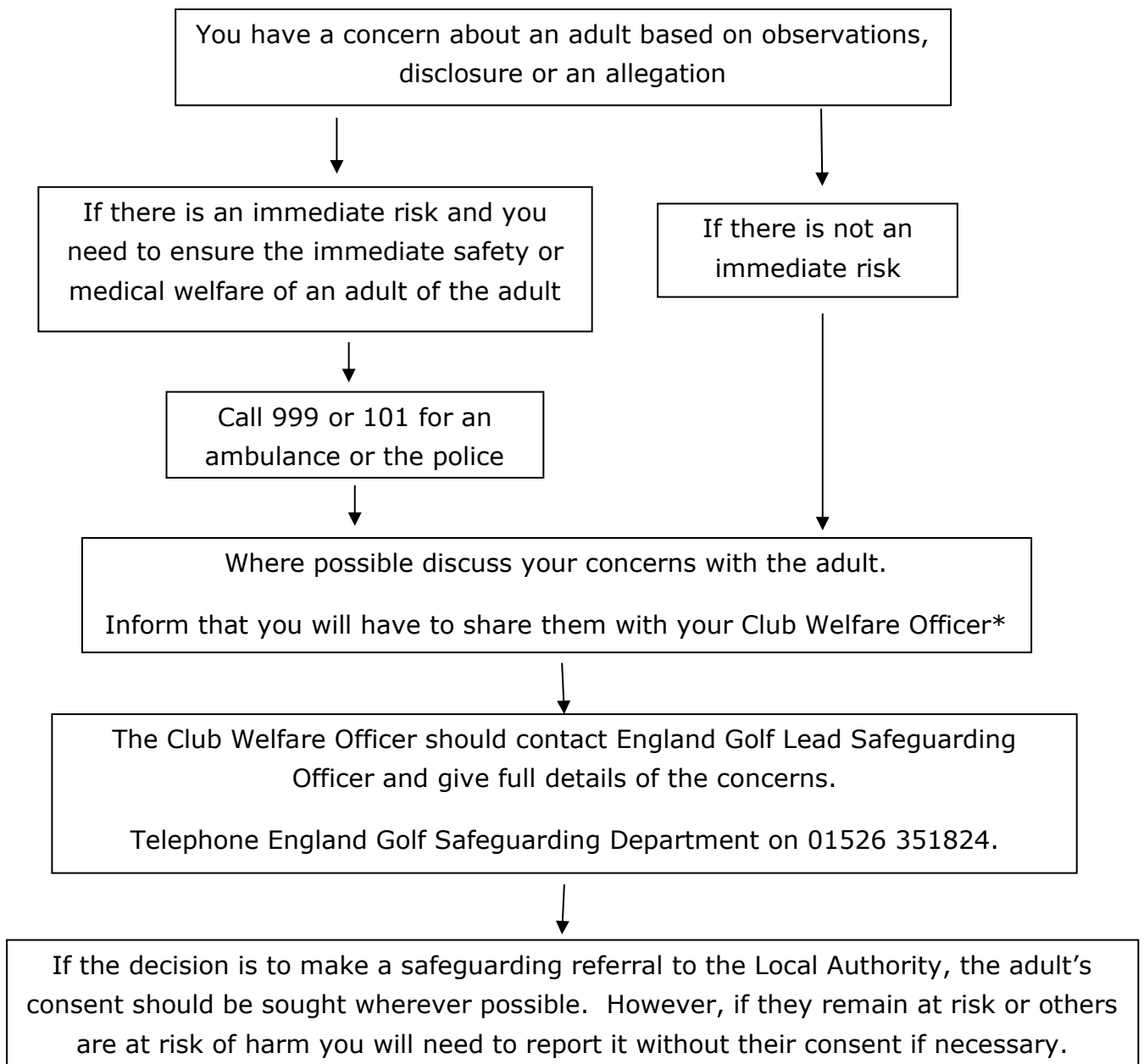
Name	Address	Number and email
Warrington Borough Council – Safeguarding Adults		<a href="mailto:safeguardingpartnerships@warrington.gov.uk">safeguardingpartnerships@warrington.gov.uk</a>
Warrington Borough Council- Social Care- Emergency Duty Team		

### National Contacts

Name	Website	Number and email
Ann Craft Trust - Safeguarding Adults in Sport and Activity	<a href="http://www.anncrafttrust.org">www.anncrafttrust.org</a>	0115 951 5400 Ann-Craft Trust@nottingham.ac.uk
Samaritans		01522 782333

## Safeguarding Adults Flowchart

### What to do if you have a concern about an adult?



### Remember

It is not your duty to investigate concerns about an adult but do not ignore them – talk to the adult if possible and get in touch with someone within your organisation or the local authority for advice.

\* If for any reason a Club Welfare Officer is not in post, or is unavailable a principle of least delay is important. Please contact the England Golf Lead Safeguarding Officer